

ClearOne®

VIEW® Pro - E110 and E120 Digital AV Encoders
INSTALLATION AND USER MANUAL



ClearOne
5225 Wiley Post Way
Suite 500
Salt Lake City, UT 84116

Telephone 1.800.283.5936
 1.801.974.3760

FAX 1.801.303.5711

E-mail tech.support@clearone.com

On the Web www.clearone.com

VIEW PRO E110 AND E120 INSTALLATION MANUAL

CLEARONE DOCUMENT

DOC-0149-001 JULY 2016 (Rev. 1.3)

© 2016 ClearOne Inc. All rights reserved. No part of this document may be reproduced in any form or by any means without written permission from ClearOne. ClearOne reserves specific privileges.

Information in this document is subject to change without notice.

Table of Contents

INTRODUCTION

Product Overview	1
StreamNet AVoIP™ Video Platform	1
Device Application.....	1
Included with Your VIEW Pro Encoder.....	1

CONNECTIONS

Inputs and Connections	2
Status LED.....	2
10/100/1000 Ethernet Jack	2
HDMI Inputs.....	3
IR In.....	3
IR Out	3
RS-232 (COM).....	3
19VDC Input	3

INSTALLATION

Physical Characteristics	4
Dimensions (Excluding Connectors).....	4
Mounting the E110 or E120	4
The E110 or E120 in a Network	6
Connecting the E110 or E120	6

SOFTWARE SETUP OF THE E110 OR E120

LUA File	7
E110 or E120 Screens in the Dealers Setup Program	8
Adding an E110 or E120 to a Project.....	8
The Information Tab.....	10
The Sources Tab.....	11
The Sources Tab Advanced Configuration.....	12
Editing a Stream	13
Premium Features	15
Editing Stream Presets.....	15
Video Presets	16
Audio Presets.....	18
The GPIO Settings Tab	20
Input Macro Assignments	20
Relay Assignments.....	20

VIEW PRO RS-232 CONTROL

LUA File Driver Templates	21
Preparing the New One-Way RS-232 Driver File	21
Preparing the Encoder/Decoder	23
Modifying the One-Way Driver File	24

VIEW PRO AND VIEW LEGACY INTEROPERABILITY

Control Sharing	29
Audio Streaming Interoperability	29
IR Learning and Control	30
Firmware Upgrading	30

VIEW PRO ACCESSORY KITS

Kit Descriptions	31
-------------------------------	-----------

COMPLIANCE

Compliance Overview	32
RoHS Compliance	32
Stainability	32
Electrical Safety Advisory	32
Compliance Details	32
FCC Compliance	32
AVC Patent Portfolio License	32
European Compliance	32

SERVICE AND SUPPORT

Technical Support	33
Sales	33
Techsales	33
Product Returns	33

Introduction

PRODUCT OVERVIEW

StreamNet AVoIP™ VIDEO PLATFORM

The StreamNet IP platform is designed to send high-quality audio and video over a TCP/IP network (AVoIP™). An encoder, such as a VIEW Pro E110 or E120, takes digital video and audio from a source device, such as a receiver, cable box or DVR, and makes the source available anywhere on the StreamNet network. A decoder, such as the VIEW Pro D110, takes the combined video and audio stream and decodes it. The D110 then sends the video and audio to a display such as a HDTV or projector and sound system.

DEVICE APPLICATION

The E110 and E120 are high definition, Internet Protocol, compressed multimedia encoders. The E110 or E120 connects to a TCP/IP network using an Ethernet connection. When installed at the location of the multimedia source, an encoder works in connection with a VIEW Pro D110, D210, or D310 decoder, installed at the location of the display.

Installation should be done by a qualified Dealer Service representative. Please consult the DigiLinX Installation Manual for device use in system configuration.



INCLUDED WITH YOUR VIEW PRO ENCODER

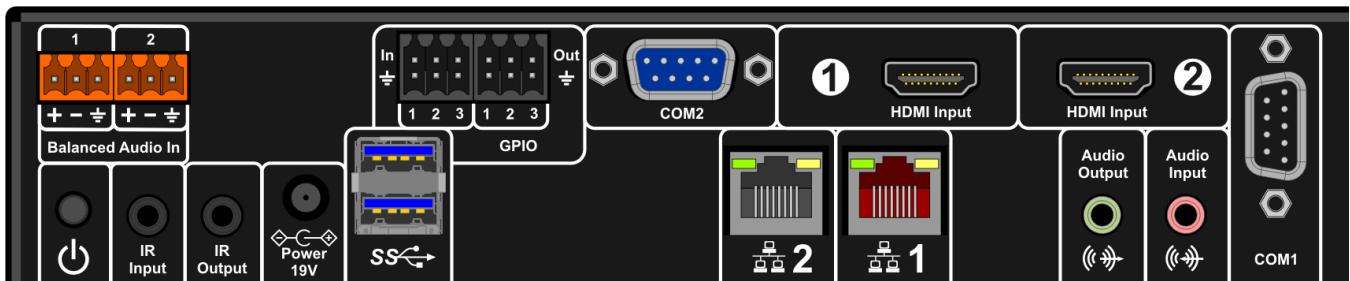
The following items are included with the VIEW Pro Encoder:

Item	Description
910-0000-006 or 910-0000-001	VIEW Pro Encoder E110 or E120 Power Supply, Power Cord
910-0002-001	VIEW Pro Rack Mount <ul style="list-style-type: none">• 2X - Rack Ear, Extended length• 6X - Screw, M3 x 6mm, Pan-head, Philips, Thread Locking, Black
QSG-0010-001	VIEW PRO Encoder/Decoder Quick Start Guide

Connections

The VIEW Pro E120 Encoder has the following input and output connectors on the back of the unit.

- 1x - IR Input connector compatible with SteamNet IR sensor (3.5mm)
- 1x - IR Input Receiver window on front panel
- 1x - IR Output connector compatible with SteamNet IR emitter (3.5mm)
- 2x - Balanced Audio Input (Two Modular Phoenix-type connectors, left and right)
- 3x - GPIO (General Purpose Inputs - Digital, 0/5V, Phoenix-type)
- 3x - GPIO (General Purpose Outputs - Latching, Relays, Phoenix-type)
- 1x - Stereo 3.5mm Barrel Plug (Line Level) Input
- 1x - Stereo 3.5mm Barrel Plug (Line Level) Output (Currently not used)
- 2x - HDMI-input connectors.
- 2X - RS-232 DB-9 connector
- 2x - RJ45 10/100/1000 Mb Ethernet jack (Use only jack 1)
- 3x - USB connectors (one USB connector on front panel not visible)
- 1x - 19V DC Power Connector



The VIEW Pro E110 Encoder has exactly the same input and output connectors on the back of the unit as the E120, but with only one 1 HDMI input connector instead.

INPUTS AND CONNECTIONS

The E110 or E120 transmits the digital video and audio on the network.

STATUS LED

An LED on the front panel lights up when the unit is powered and to report status:

- Off=Off
- Yellow=Update process has started (e.g.: Update Devices)
- Blue=Normal Operation
- Green=System Startup/shutdown
- Red=Error Condition

10/100/1000 ETHERNET JACKS

The 10/100/1000 Mb Ethernet connector allows connection to TCP/IP networks setup to run StreamNet. Only Port 1 (Red Jack) is supported. The other is a service port that MUST NOT be connected.

HDMI INPUTS

The HDMI connectors on the E110 or E120 receive digital video and audio.

IR IN

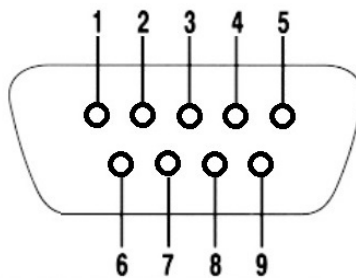
This jack allows connection of an StreamNet compatible infrared receiver. The infrared receiver can pick up IR remote control signals for IR learning.

IR OUT

This jack allows connection of an infrared transmitter. The infrared transmitter can send IR remote control signals.

RS-232 (COM)

These jacks allow the E110 or E120 to control a source, or other connected source device. They support sending and receiving RS-232 commands to control devices.



Pin	Signal	Pin	Signal
1	Data Carrier Detect	6	Data Set Ready
2	Received Data	7	Request to Send
3	Transmitted Data	8	Clear to Send
4	Data Terminal Ready	9	Ring Indicator
5	Signal Ground		

19VDC INPUT

This connector provides power input for the E110 or E120. This power is available using the included power supply.

Installation

PHYSICAL CHARACTERISTICS

DIMENSIONS (EXCLUDING CONNECTORS)

Width: 12.2 inches (310mm)

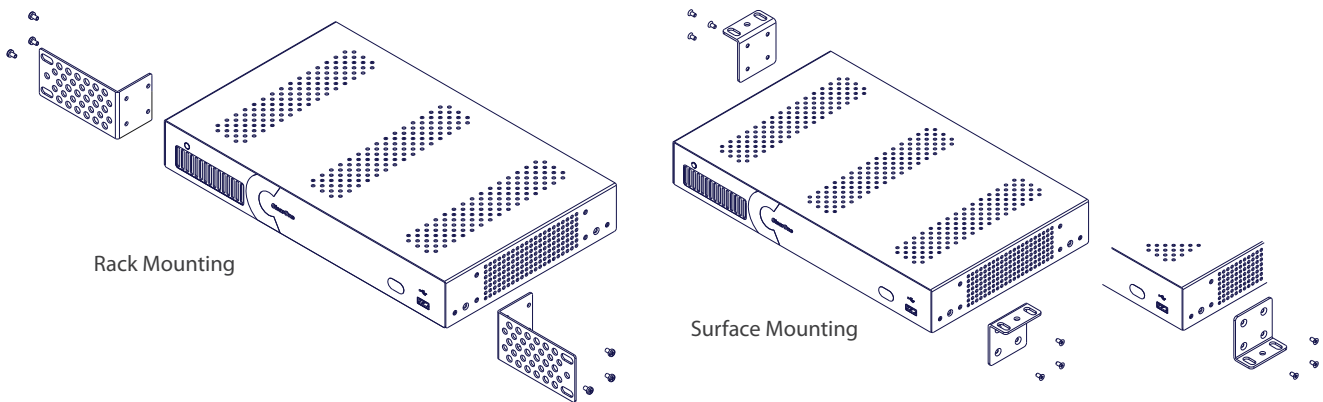
Length: 7.4 inches (188mm)

Height: 1.75 inch (44.4mm)

MOUNTING THE E110 OR E120

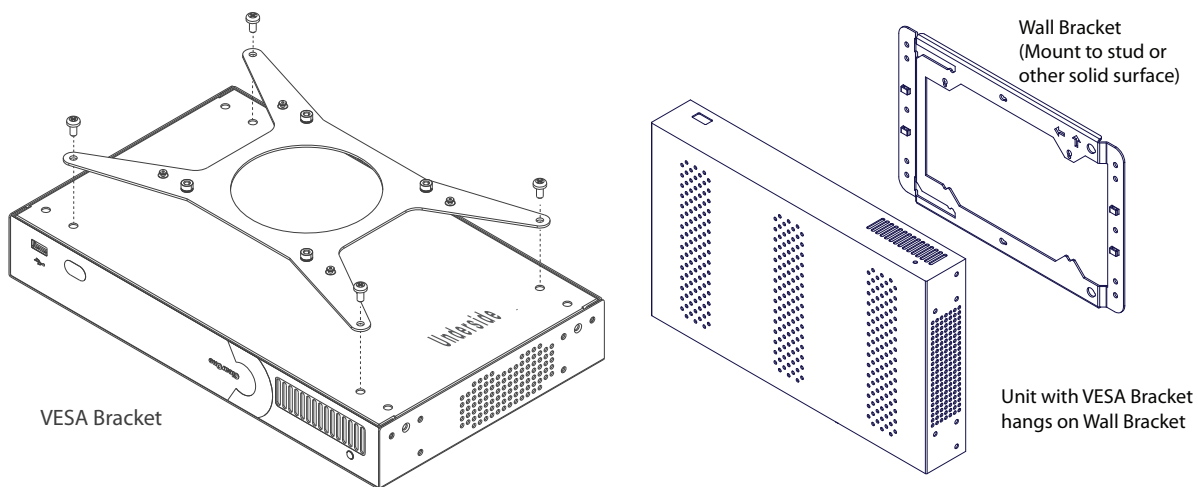
The VIEW Pro encoder includes a Rack Mount Kit (910-0002-001) with rack-mount ears that attach to the encoder to facilitate mounting in a standard rack.

When mounted, the I/O connections are accessible from the back of the unit. (If needed, the unit can also mount with the I/O connections facing the front of the rack.)

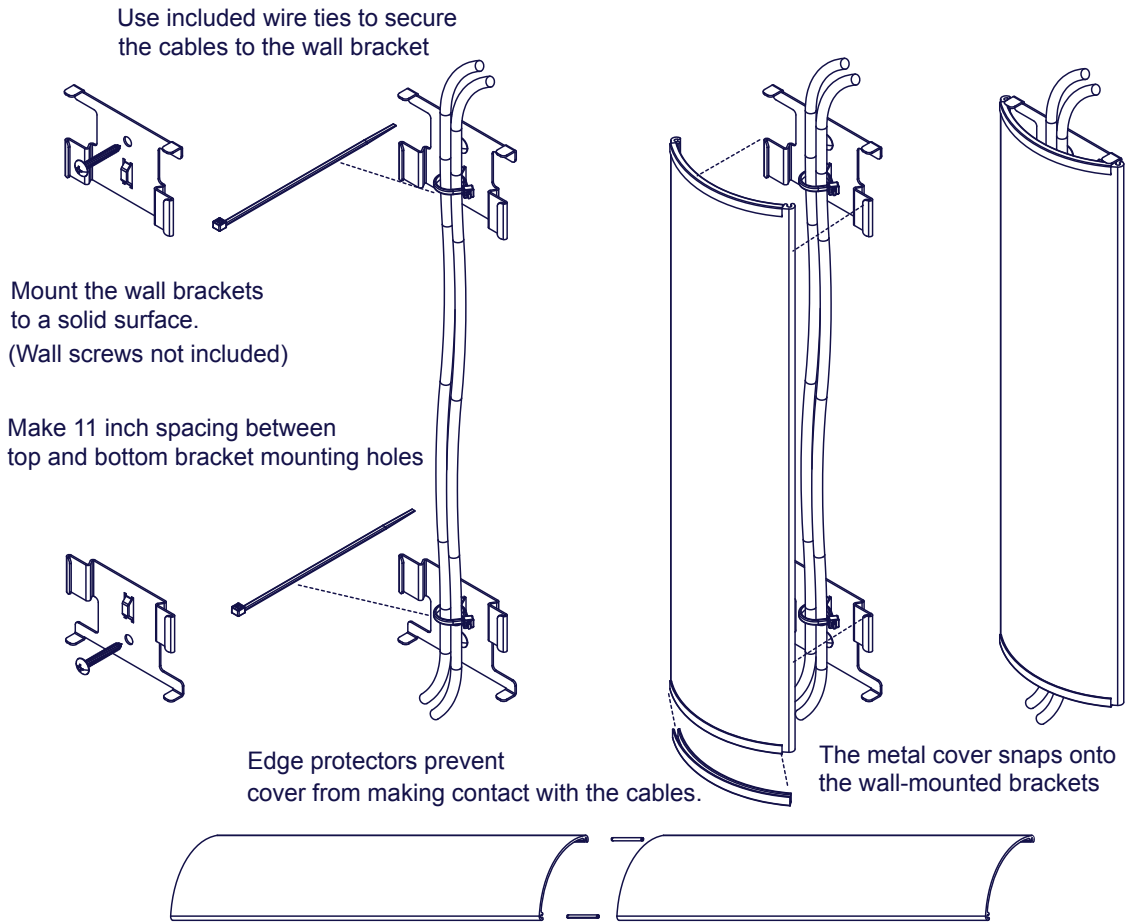


The VIEW Pro encoder can also be surface mounted using the optional Wall Mount Kit (910-0002-002) with surface-mount ears that attach to the encoder to facilitate mounting.

An optional VESA mount bracket Kit (910-0002-006) is available for applications where an encoder must be located on a VESA mount.



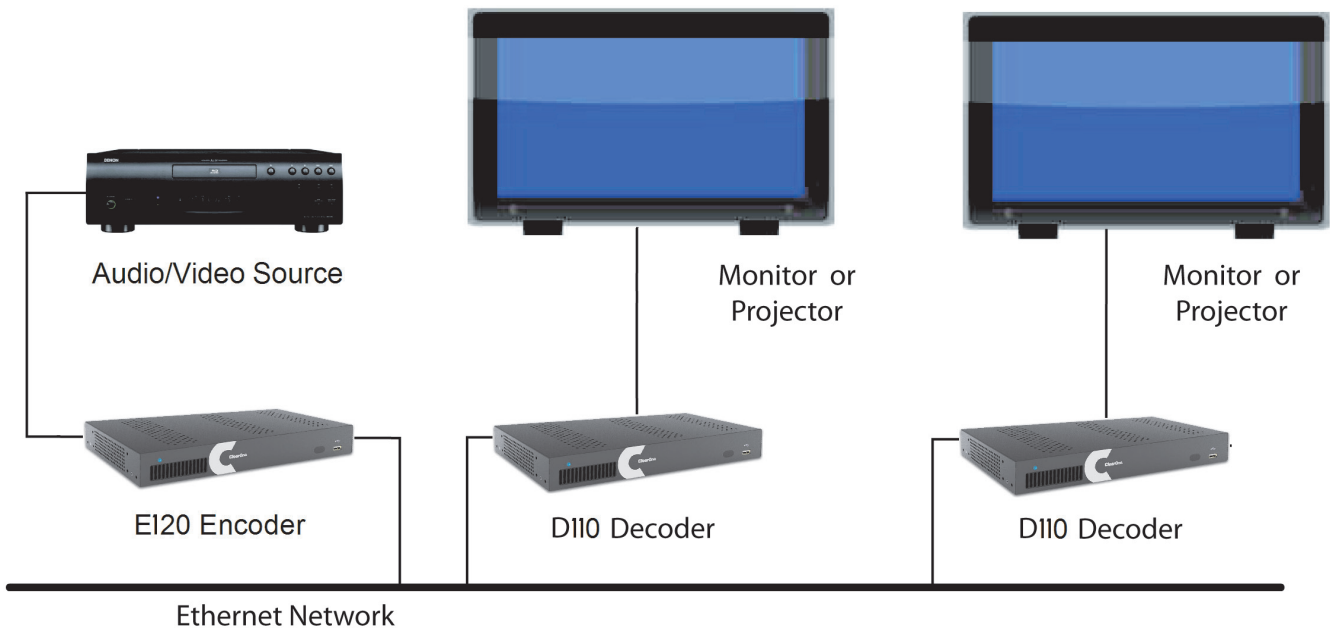
There may be some situations where the VIEW Pro cables cannot be concealed within a cabinet or in a wall. These cables can be surface mounted and concealed using the optional 910-0002-003 VIEW Pro Cable Raceway Kit. This raceway, in 12-inch joinable lengths, can be mounted to the wall to secure and cover the cables to the VIEW Pro devices.



Two sections or more kits may be combined to make a longer raceway. Join them using the included spring pins.
The metal cover may be cut to size as needed.

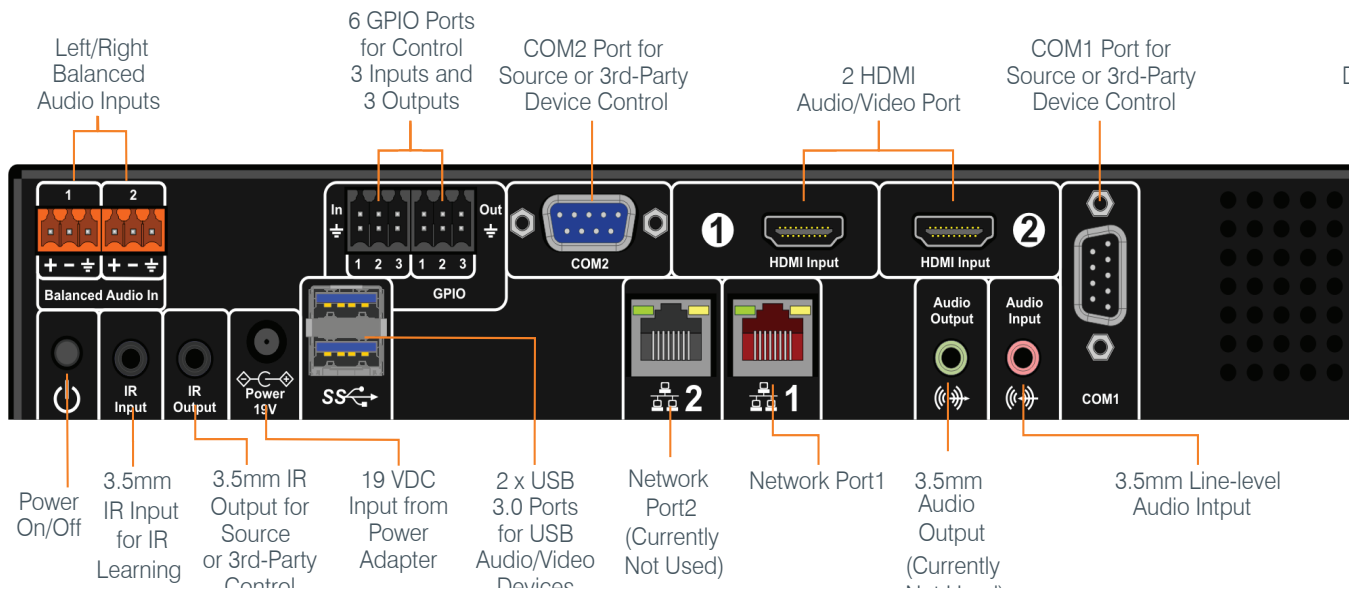
THE E110 OR E120 IN A NETWORK

The VIEW Pro E110 or E120 encoder takes digital video and audio from source devices such as media/disc players, cable/satellite boxes, DVRs, and cameras, and then makes the digital video and audio available anywhere on the StreamNet® IP network. a StreamNet TCP/IP network using a standard 10/100/1000 Mbit Ethernet connection. The VIEW Pro decoders, as counterparts, are installed at the locations of the target video displays. They operate together: the encoders providing the IP data for the decoders to deliver to the displays..



CONNECTING THE E110 OR E120

The E110 or E120 Encoder connections are from the back of the unit as shown in the following diagram.



Software Setup of the E110 or E120

The E110 or E120 is setup for use in a commercial or residential network using the StreamNet Dealer Setup program and the accompanying StreamNet Dealer Setup manual. StreamNet Dealer Setup is a PC-based program that allows you to configure devices so that they can communicate across a StreamNet network. Phases of the software setup include:

- Adding or creating a new project or opening an existing project
- Finding the new device
- Matching the new E110 or E120 physical hardware device to the hardware setup in the project
- Configuring the device with system-specific information
- Saving the project
- Sending the configuration files to the devices

The steps involved in these processes are detailed in the DigiLinX Dealer Setup manual available for viewing or download at www.ClearOne.com.

LUA FILE

Control options for VIEW Pro devices using StreamNet Dealer Setup is facilitated but the .lua file found in the C:\Program Files x86)\ClearOne\StreamNet Application Suite\viewPro\drivers directory

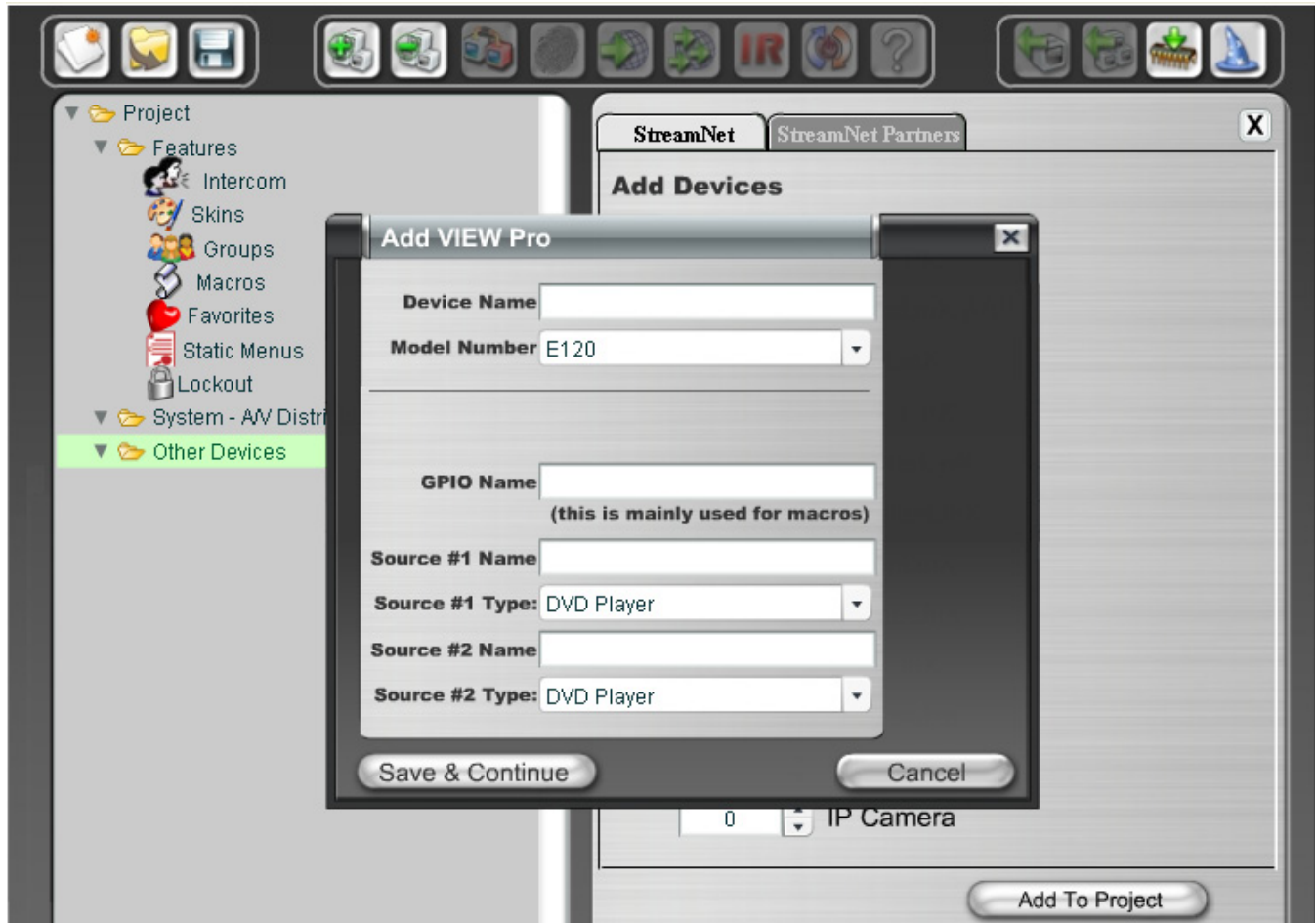
VIEW Pro has two DB9 Serial ports available on both Encoder and Decoder.

Information about editing and using .lua files for RS-232 control is included in the VIEW Pro RS-232 Control section later in this manual.

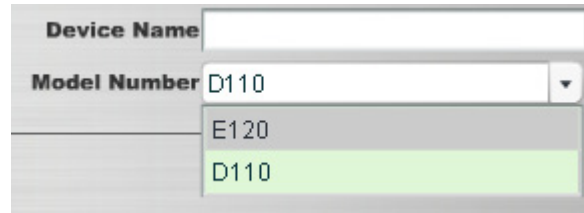
E110 OR E120 SCREENS IN THE DEALER SETUP PROGRAM

Verify the configuration information on the tabs for the E110 or E120 device as shown in the following screen examples:

ADDING AN E110 OR E120 TO A PROJECT



1. Enter the following information:
Device Name - Edit to name the E110 or E120 Device.
Model Number - Select the E110 or E120 Device.



The image shows a configuration window with two fields: 'Device Name' and 'Model Number'. The 'Model Number' field is a dropdown menu that is currently open, displaying two options: 'E120' and 'D110'. The 'D110' option is highlighted in green, indicating it is the selected value.

2. Enter the following information:
GPIO Name - This is mainly used in macros. By default this receives the Device Name.
Source Names - Edit to name sources. (There are two HDMI Audio/Video and two Analog-Only Audio (Balanced, UnBalanced) sources available for the E110 or E120.)

» **NOTE: Whatever you type in for each source name here will appear in the list of sources on the TouchLinX touch panel interface and VIEW Virtual Matrix.**

Source Type - Use the drop-down list (using the down arrow key) to select what type of source this is for each named source. The source type brings up the appropriate controls for the source. There are several types of sources.



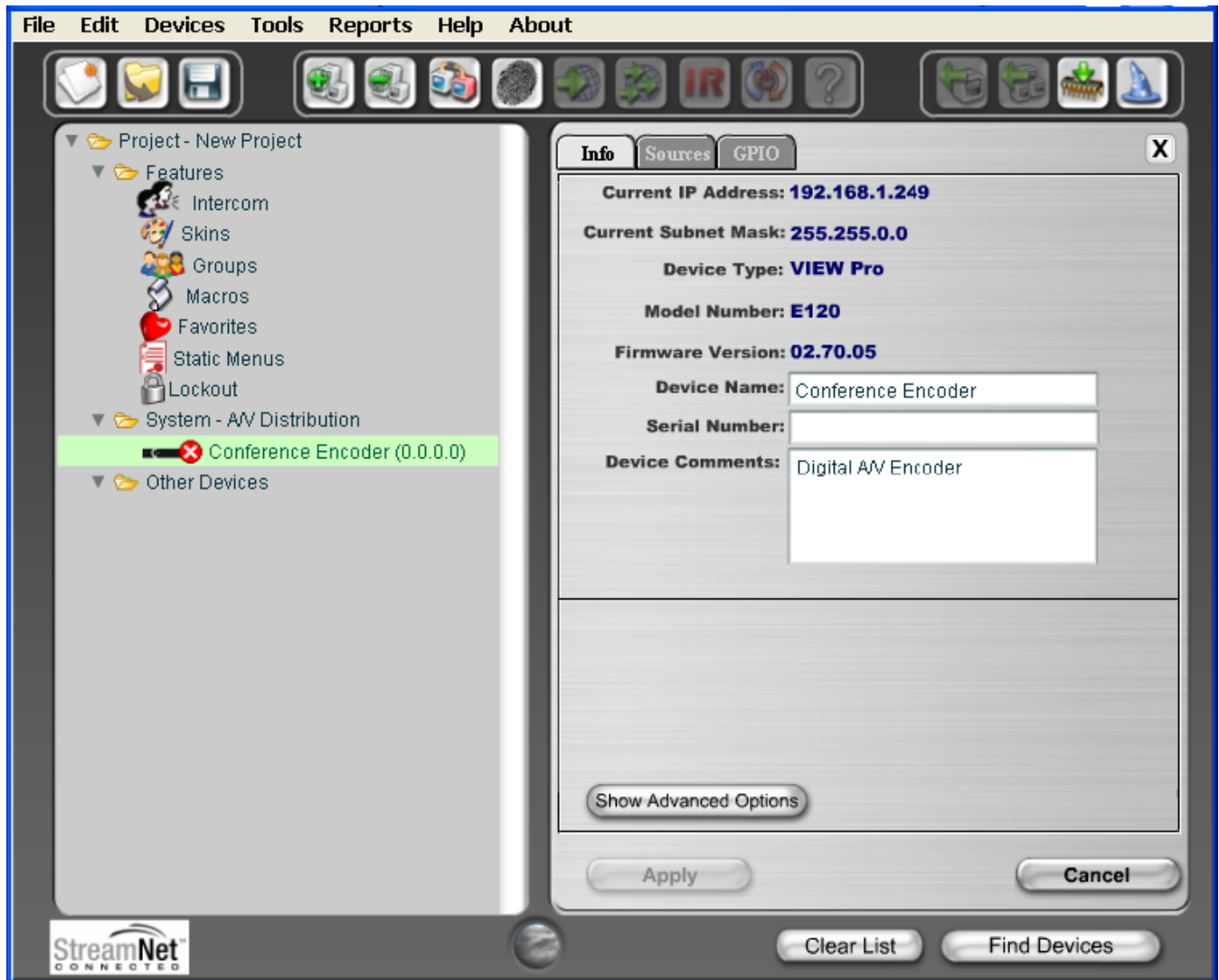
The image shows a configuration window with several fields: 'Source #1 Type', 'Source #2 Name', and 'Source #2 Type'. The 'Source #2 Name' field is a dropdown menu that is currently open, displaying five options: 'DVD Player', 'Digital Video Recorder', 'CD Player', 'Generic Device', and 'Generic Media Server'. The 'DVD Player' option is highlighted in green, indicating it is the selected value. A 'Save & Continue' button is visible at the bottom left of the form.

» **NOTE: Source type parameters and definitions that are used in StreamNet networks are contained in .lua driver files. Customized types can be created using existing files as templates, editing them as desired, and saving as a new type that is then available for use by the VIEW Pro. For more information regarding creating an using template files, see the Using Templates section later in this document**

3. Select **Save & Continue**
4. Complete the information for each E110 or E120 in your project.

THE INFORMATION TAB

The Information tab contains all of the information about that particular A/V device:



Current IP Address - The current IP address of the E110 or E120.

Current Subnet Mask - The current subnet mask of the E110 or E120.

Device Type - The type of device that this is.

Model Number - The E110 or E120 model number.

Firmware Version - What firmware version is currently running on the E110 or E120.

Device Name - Descriptive name assigned to the device when creating the project.

Serial Number - Displays the E110 or E120 serial number.

Device Comments - Indicate where the device is installed so that if you need to return to the installation for service or upgrading devices, you can have access to this information in the project file.

THE SOURCES TAB

The Sources tab contains all of the settings and information about the sources connected to the E110 or E120:



There are two Audio/Video (HDMI) and two Analog sources available for the E110 or E120. Each one used needs to be configured within the project.

Source Name - This name appears as a selection on all user interfaces and identifies the source.

Source Type - The type of source connected to the VIEW Pro. (May be selected from CD player, DVD player, DVR, generic device, generic media server or cameras etc.)

Driver File - The new driver file for the video source. (Allows you to select the designated .lua driver file. The ViewPro Lua files are stored in the ClearOne StreamNet Dealer Setup directory (C:\Program Files (x86)\ClearOne\StreamNet Application Suite\viewPro\drivers).

- » **NOTE: A replacement .lua file can be created from a template that will allow customizing the VIEW Pro encoder/decoder to receive RS-232 commands instead of IR. For more information regarding creating an using template files, see the Using Templates section later in this document**

Audio Source - Allows you to select what kind of audio input the VIEW Pro uses for this stream. (May be selected from HDMI 1, HDMI 2, Balanced or Unbalanced.)

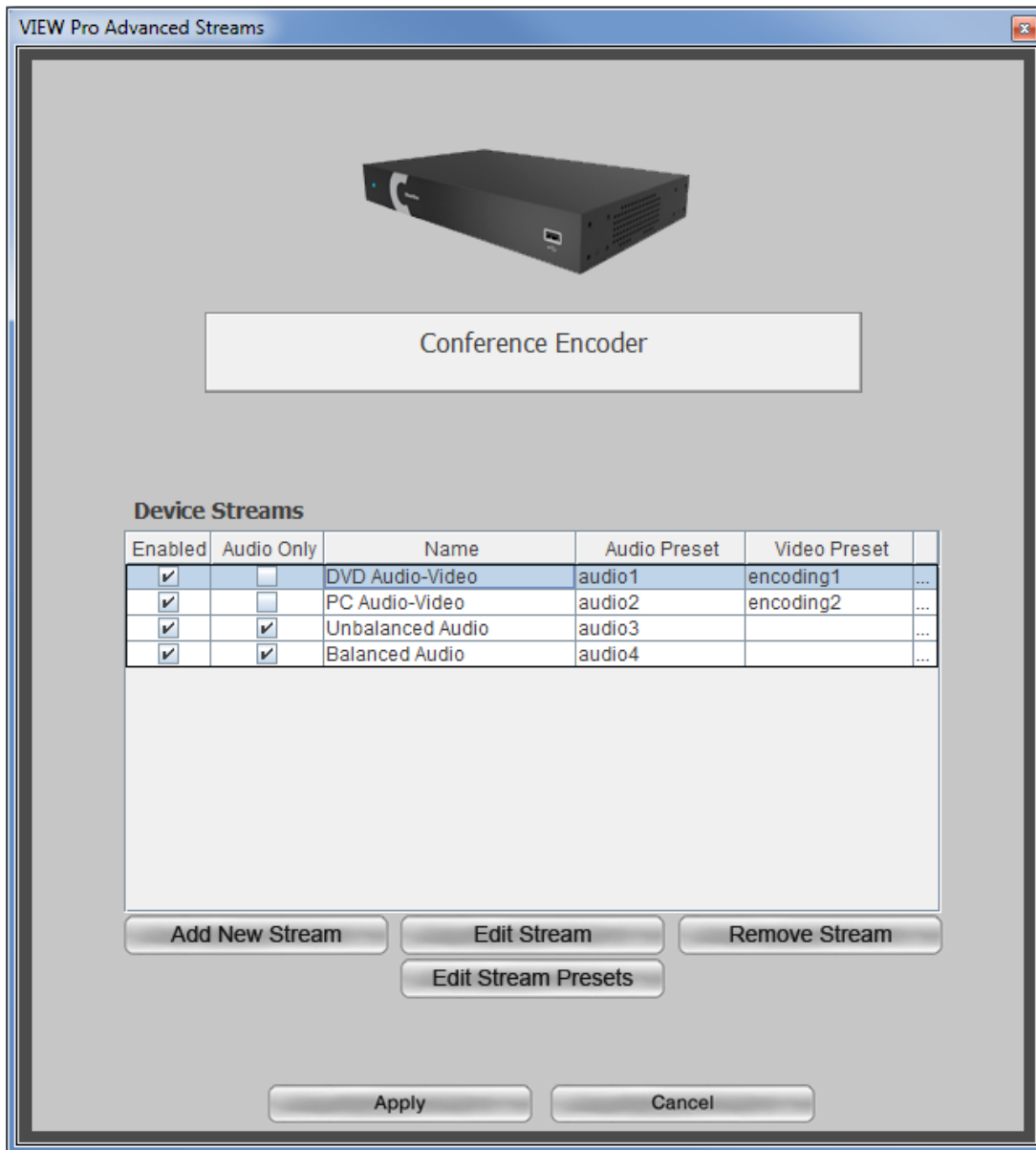
Gain - The Audio Gain drop-down for setting the audio input gain up or down to match that of other sources in the system. Select from ± 0 , 3, or 6 dB amplification or attenuation of audio source.

Advanced Configuration - This button is unavailable and greyed out when any <Video Stream> source Enable check box is selected. To enter Advanced Configuration, un-check the Enable check boxes, and press the **Apply** button. Now the **Advanced Configuration** button is available

THE SOURCES TAB **ADVANCED CONFIGURATION**

If all the <Video Stream> Enable check boxes are unchecked, advanced configuration is available to specify the details of the source streams. Up to two Audio/Video streams can be defined as well as multiple Audio-Only streams.

To open Advanced Configuration, click on the **Advanced Configuration** button on the bottom of the screen in the Sources tab.

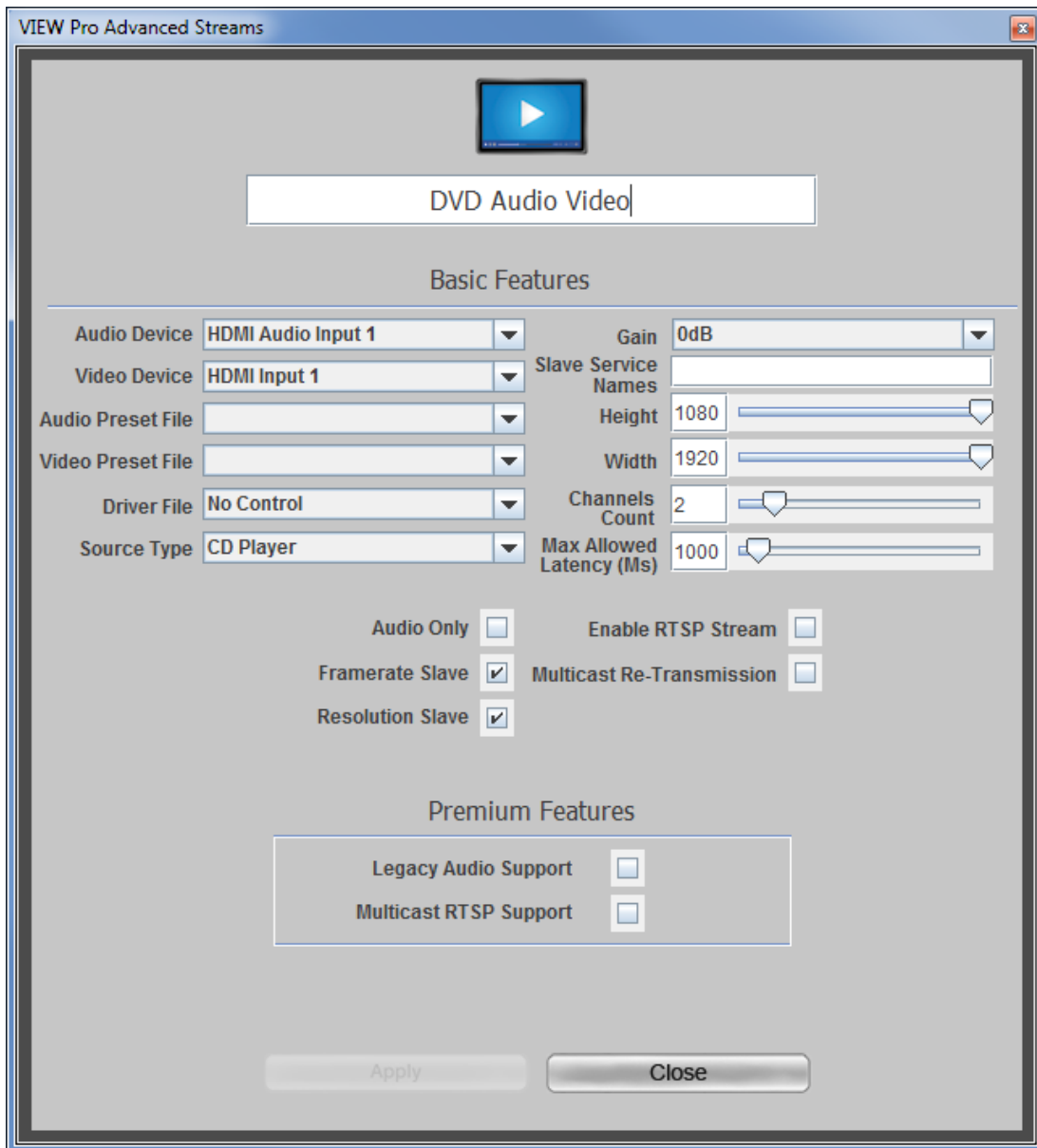


This screen allows the addition, editing and deletion of device streams for the encoder. When a new stream is added, it can be selected to then edit the stream and edit the stream presets.

EDITING A STREAM

Click on the name of the stream you are editing, then click on **Edit Stream**.

On the **Edit Stream** screen you can select from preset characteristics for the stream.



Audio Device – The physical input port for the audio stream.

Video Device – The physical input port for the video stream.

Audio Preset File – The audio preset file that is linked to this stream.

Video Preset File – The video preset file that is linked to this stream

Driver File – The lua driver that executes any source or 3rd-party commands coming from the network to control the stream including IR.

- » **NOTE:** A replacement .lua file can be created from a template that will allow customizing the VIEW Pro encoder/decoder to receive RS-232 commands instead of IR. For more information regarding creating an using template files, see the VIEW Pro RS-232 Control section later in this document.

Source Type – The type of source for the stream (CD, DVD, Tuner).

Gain - Sets the volume of the stream in the final mix. The Audio Gain drop-down for setting the audio input gain up or down to match that of other sources in the system. Select from ± 0 , 3, or 6 dB amplification or attenuation of audio.

Slave Service Names – The names of the lua/ir services in the system that handle ASCII control commands.

Height – The display height of the stream in pixels.

Width – The display width of the stream in pixels.

Channels Count - Sets the number of audio channels that are present in the stream.

Max Allowed Latency - Sets the maximum latency the video stream allows, beyond which frames will be dropped to avoid limit-less buffering.

Audio Only – makes the stream audio only, with no video present.

Framerate Slave - When turned on, the stream's frame rate is dynamically controlled by the source layout's frame rate. Otherwise, the frame rate is set by these parameters.

Resolution Slave - When turned on, the stream's resolution is dynamically controlled by the source layout's resolution. Otherwise, the resolution is set by these parameters.

Enable RTSP Stream - Decides whether the data will be available through a UNICAST RTSP stream as well as the default proprietary stream.

Unicast RTSP Streaming means that every instance of the Stream selected by an RTSP Player (e.g.: PotPlayer, VLC) will create a unique RTSP Stream from the Encoder. Three programs trying to access this stream over RTSP will require the Encoder to create three instances of the stream, which takes up resources within the Encoder and limits the number of Players that can watch/listen to this stream.

PREMIUM FEATURES

Legacy Audio Support - This Premium Licensed Feature allows the creation of Audio-Only Streams which can be selected and listened to using the ClearOne Legacy Renderers (SLxxx, VLxxx).

MultiCast RTSP Support - This Premium Licensed Feature allows an RTSP-compatible A/V or audio-only stream to be created within the Encoder. When creating an Multicast RTSP stream, the Basic Features box for **Enable RTSP Stream** must also be checked.

Multicast RTSP Streaming means that the Encoder will create only one instance of the A/V or Audio Only Stream, and will send it to Players requesting a connection via Multicast. Any number of Players can attach to this Stream without increasing bandwidth or processing loading on the Encoder. Multicast RTSP requires Licensing, but any number of Players can join the Stream without additional overhead CPU or Networking capacity being used due to the use of the Multicast Networking.

EDITING STREAM PRESETS

User Video and Audio Presets can be created, deleted or edited for use in any stream configuration to meet the requirements of the sources and encoder. Once a preset has been created it can be assigned and enabled to any device stream.

- » **NOTE:** Dealer Setup comes with several pre-defined preset settings for video and audio. These pre-defined presets can be used, but cannot be deleted nor edited; only user-created presets can be changed or removed.

Click on the **Edit Presets** button to open the Preset Editor screen.

The Preset Editor screen has panels listing video and audio presets. Selecting a preset from either of the panels presents the selected preset characteristics in the right hand panel.

Adding or Deleting of presets is done with the **Add** and **Delete** buttons. Click on the **Edit Presets** button to open the Preset Editor screen.

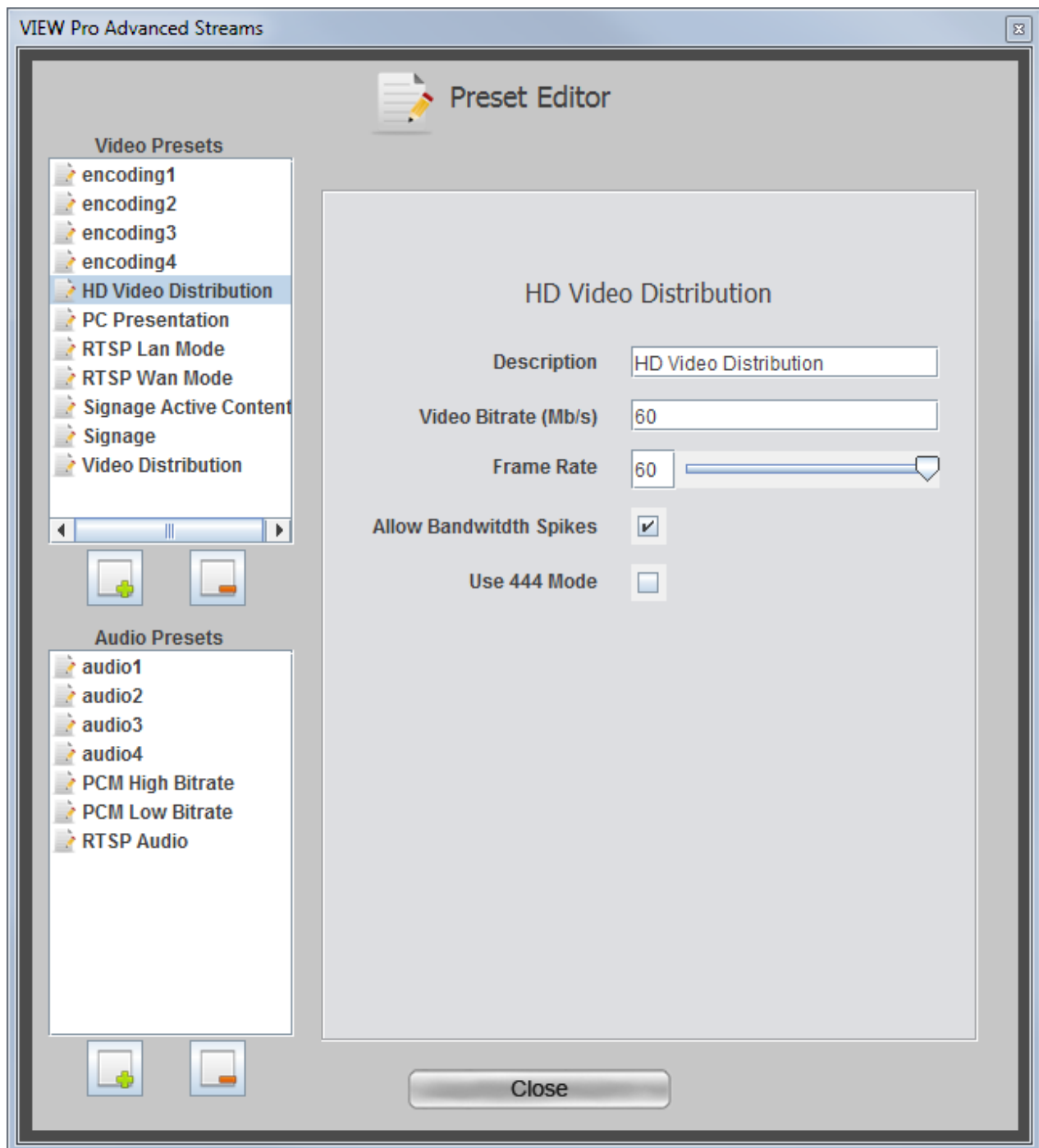
The Preset Editor screen has panels listing video and audio presets. Selecting a preset from either of the panels presents the selected preset characteristics in the right hand panel.

Adding or deleting of presets is done with the **Add** and **Delete** buttons.



Video Presets

The following screen shows the “HD Video Distribution” in the Preset Editor with details on the right hand panel.



Video Presets Descriptions

HD Video Distribution - Video Distribution containing high-definition content for large screen high quality applications.

PC Presentation - Utilizes 4:4:4 Video at 24-bit color depth for maximum clarity.

RTSP Lan Mode - Optimized for Distributing RTSP video streams for LAN applications.

RTSP Wan Mode - Optimized for Distributing RTSP video streams for WAN applications.

Signage Active Content - Digital Signage containing embedded videos and/or rapid movement.

Signage - Digital Signage content containing mostly static images and text

Video Distribution - Distribution for high-definition content at a lower bandwidth for basic video applications.

Setting Video Preset Values

Video Bitrate – Sets the desired video bitrate of the video (in Mbps).

Frame Rate – The output frame rate.

Allow Bandwidth Spikes – If checked, allows the stream to exceed the allotted bandwidth momentarily, but not on average. Useful for LANs, reduces latency.

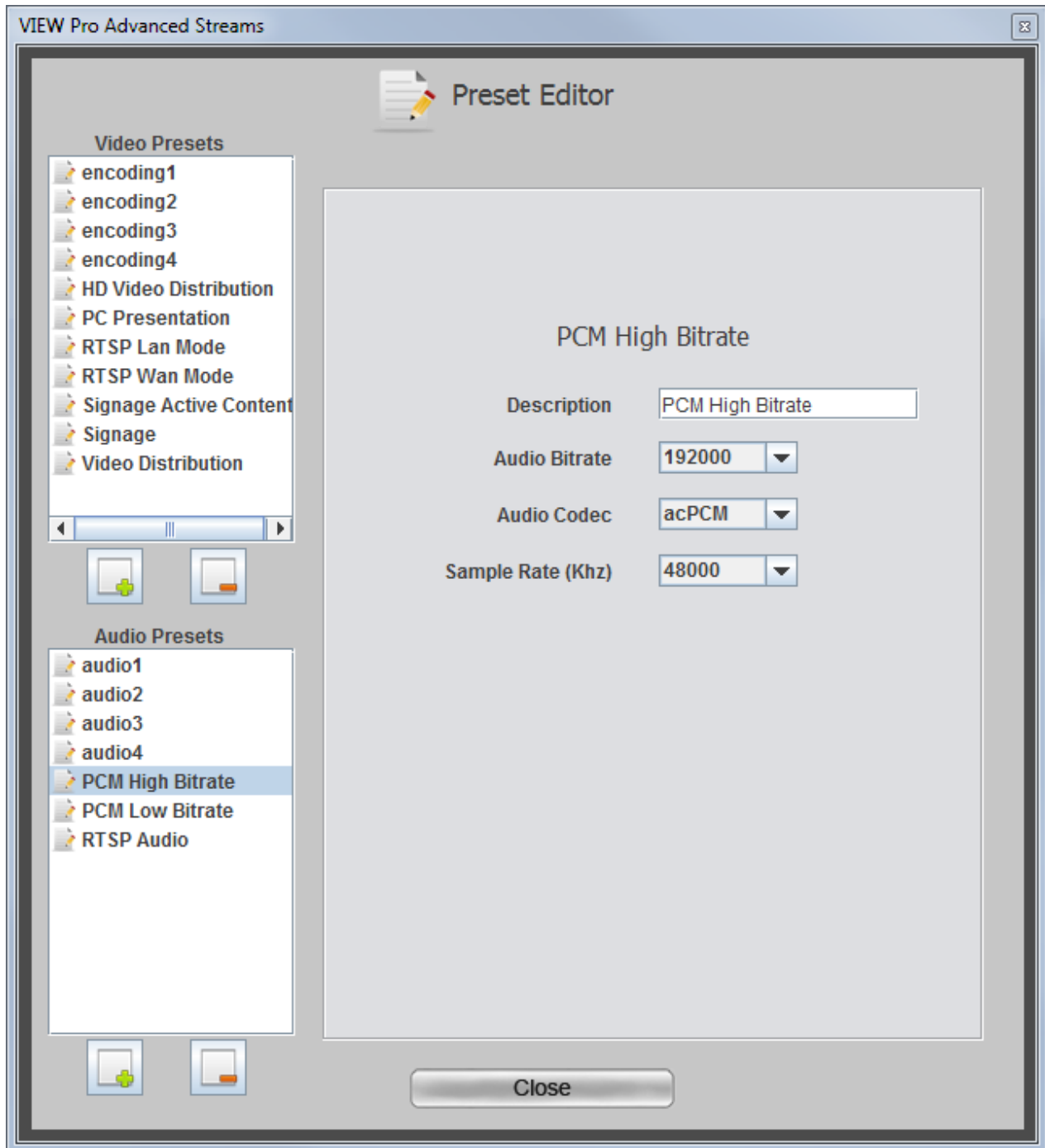
Use 444 Mode – Sets color sampling to 24 bits.

The pre-existing presets are set with these default values.

Video Presets	Video Bitrate (Mb/s)	Frame Rate	Allow Bandwidth Spikes	Use 444 Mode
Signage Active Content	60Mb	60	Yes	No
Signage	16Mb	60	Yes	No
HD Video Distribution	60Mb	60	Yes	No
Video Distribution	16Mb	60	Yes	No
PC Presentation	60Mb	60	Yes	Yes
RTSP LAN Mode	8Mb	60	No	No
RTSP WAN Mode	2Mb	60	No	No

Audio Presets

The following screen shows the “PCM High Bitrate” in the Preset Editor with details on the right hand panel.



Audio Presets Descriptions

PCM High Bitrate - Configured for High Definition Movie and Video Distribution applications.

PCM Low Bitrate - Configured for Basic Digital Signage and Video Distribution applications.

RTSP Audio - Configured using AAC Audio required by most RTSP applications.

Setting Audio Preset Values

Audio Bitrate - Sets the bitrate in bps of the audio encoding. Select 32000, 96000, 128000, 192000 or 320000 bps.

Audio Codec - Sets the codec used for audio. acAAC means using AAC encoding, acPCM will use PCM 16-bit uncompressed audio.

Sample Rate - Sets the sampling rate of the stream's audio. Select 32000, 44100, 48000, 96000, 128000 or 192000 bps.

The pre-existing presets are set with these default values.

Audio Presets	Audio Bitrate	Audio Codec	Sample Rate (kHz)
PCM High Bitrate	192000	acPCM	48000
PCM Low Bitrate	128000	acPCM	44100
RTSP Audio	128000	acAAC	44100

GPIO SETTINGS TAB

This tab allows you to choose a macro associated with each input state: High/Open and Low/Closed. The VIEW Pro macros are created and used in the same manner as the VIEW legacy products. Refer to the Dealer Setup Manual, Chapter 11 Section 1 (11-1) for the “Favorites section,” which explains macros in detail.

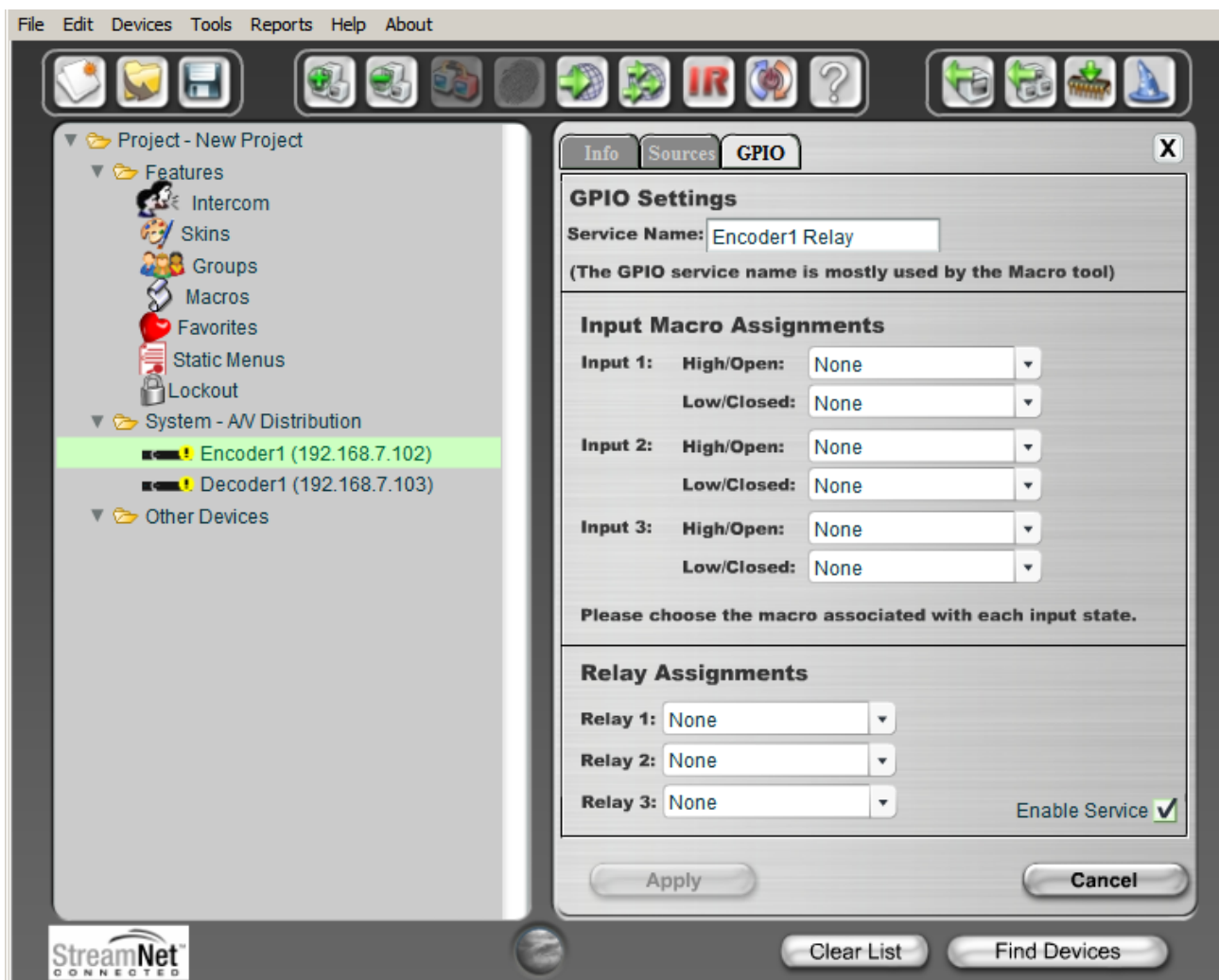
The GPIO Tab contains six GPIO components (3x Input Triggers and 3x Relays).

INPUT MACRO ASSIGNMENTS:

In the GPIO Tab you can select previously created Macros from the drop-down list for both or one Input states High/Open and Low/Closed, these Macros are triggered based on the configured state and State changes.

RELAY ASSIGNMENTS:

Each of the three relays can be set in three states: None, Normally Open and Normally Closed. These relays can be triggered to change state between Normally Open and Normally Closed to trigger an event with the connected devices (projector lifts, motorized screens, lighting, shades, etc...). These relays can be triggered by system macros (found in Macro Builder) or via TCP/IP and/or serial control commands.



VIEW Pro RS-232 Control

The VIEW Pro has two DB9 Serial ports available on both Encoder and Decoder. The function and operation of the ports is defined in a .lua file used as a driver and implemented through StreamNet Dealer Setup. These ports communicate RS-232 commands and can be used in the following scenarios:

1. Input and/or Output Control.
2. Source Control.
3. Display Control

The VIEW Pro .lua files are stored in the ClearOne StreamNet Dealer Setup directory :

(C:\Program Files (x86)\ClearOne\StreamNet Application Suite\viewPro\drivers).

If both Serial ports are to be used, then the Serial Comm Port number will need to be specified in each .lua File with a "1" or a "2" (port = "comm://default;baud=9600;bits=8;parity=0;stop=1").

LUA FILE DRIVER TEMPLATES

Driver templates created from .lua files allow the installer to create drivers that can send RS-232 commands to a source. These commands are one-way only. They are NOT capable of receiving messages from the source. This is the same level of control as using IR, but with a RS-232 connection. One-way driver templates are configured by modifying a supplied .lua file. These instructions will guide you through this process and assume you are a trained StreamNet Installer and have a working knowledge of Windows.

What you need:

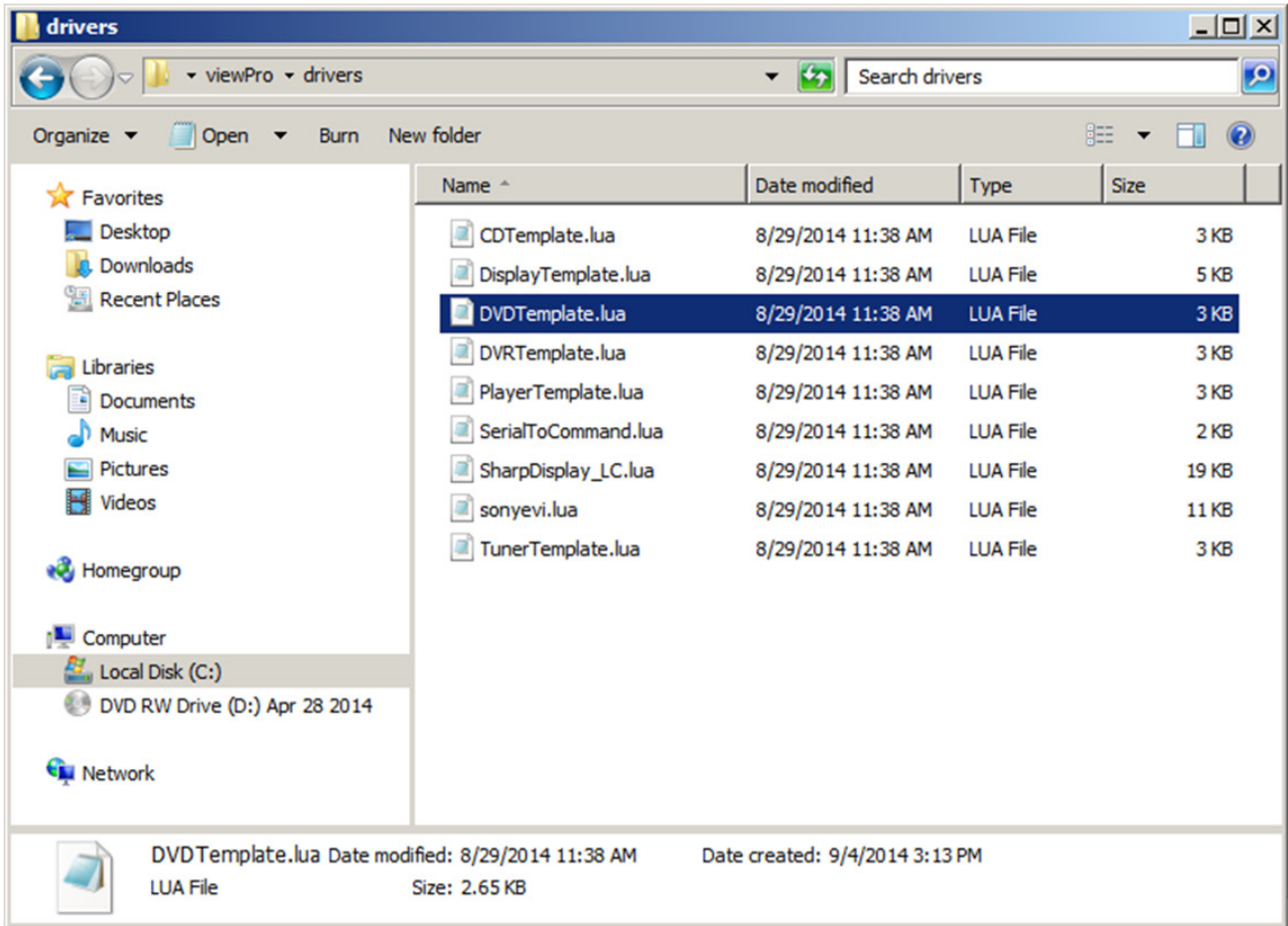
- E110 or E120
- D110, D210, D310
- DB9 Serial cable
- RS-232 controlled source
- DB9 Gender-bender (depends on source)
- Null Modem Cable or Adapter (depends on source)

PREPARING THE NEW ONE-WAY RS-232 DRIVER FILE

Driver templates can be found in <StreamNet Application Suite>\ViewPro>\Drivers. You will need to copy and rename the appropriate driver template into <StreamNet Application Suite>\ViewPro>\Drivers. If the Drivers folder does not already exist go ahead and create the folder and copy the .lua file into it. Then rename the file. This will allow you to select the driver in Dealer Setup and leave you a backup copy of the original template.

For Example: If you are creating a one way RS-232 file for a DVD you would:

- Locate the Driver Template directory
(i.e. C:\Program Files (x86)\ClearOne\StreamNet Application Suite\viewPro\drivers)
- Copy the DVDTEMPLATE.LUA file into the Drivers folder that you created
- Rename the DVDTEMPLATE.LUA In this example, we will call it TESTDVD.LUA



PREPARING THE ENCODER/DECODER

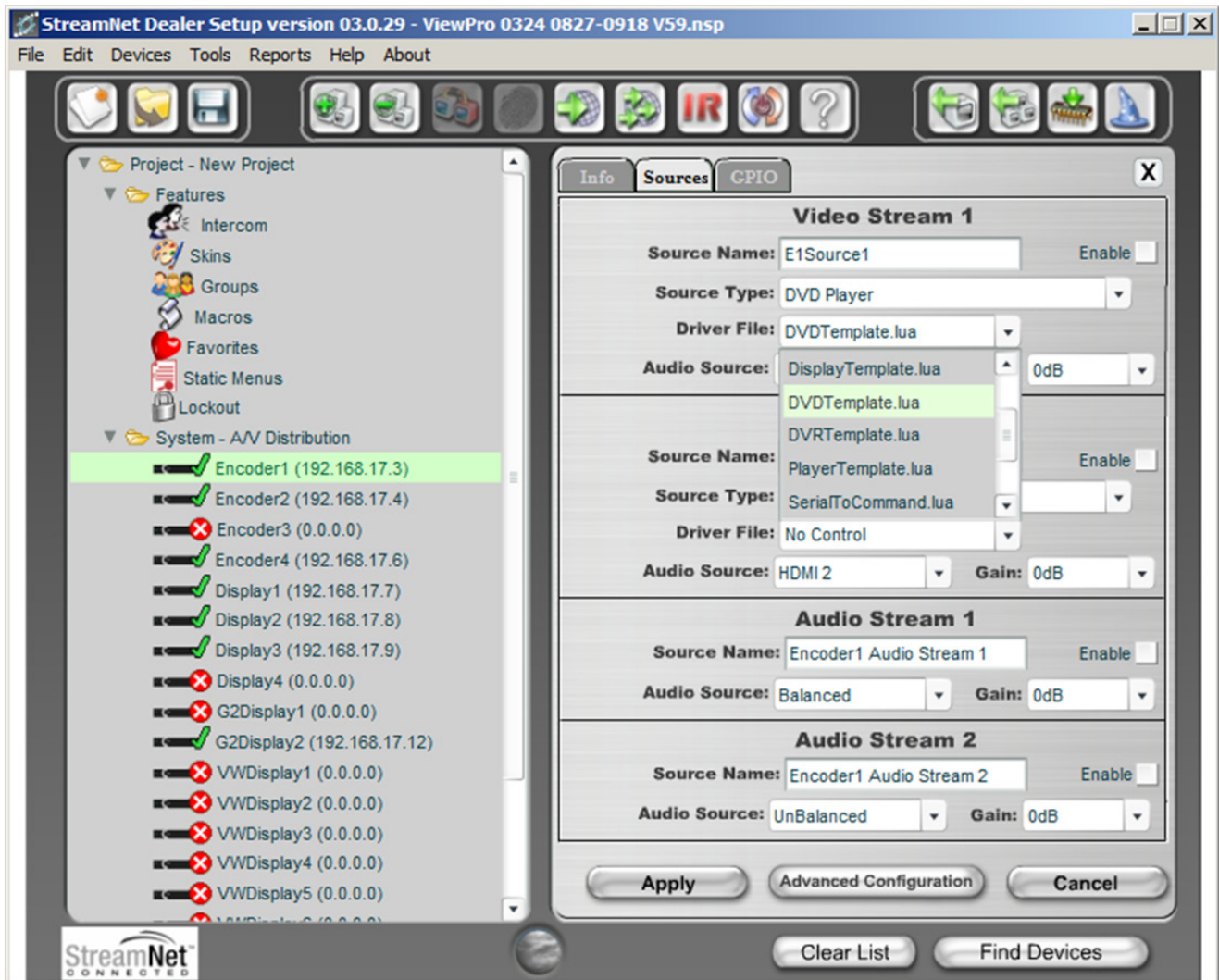
The next step is to configure the Encoder/Decoder device.

Add the Encoder/Decoder as you normally would. Do NOT choose a source type that is tied to a specific manufacturer or product model. If you are in doubt choose the source type you would use if this were an IR device. For this example, we would choose DVD.



Once the device is added select the **Sources** tab for the Encoder/Decoder.

Change the Driver file from IR to your newly created driver. For this example, we would change the driver file from IR to DVDTemplate.lua.



Now **Apply** your changes. The Encoder/Decoder is now configured to use your one-way Driver file.

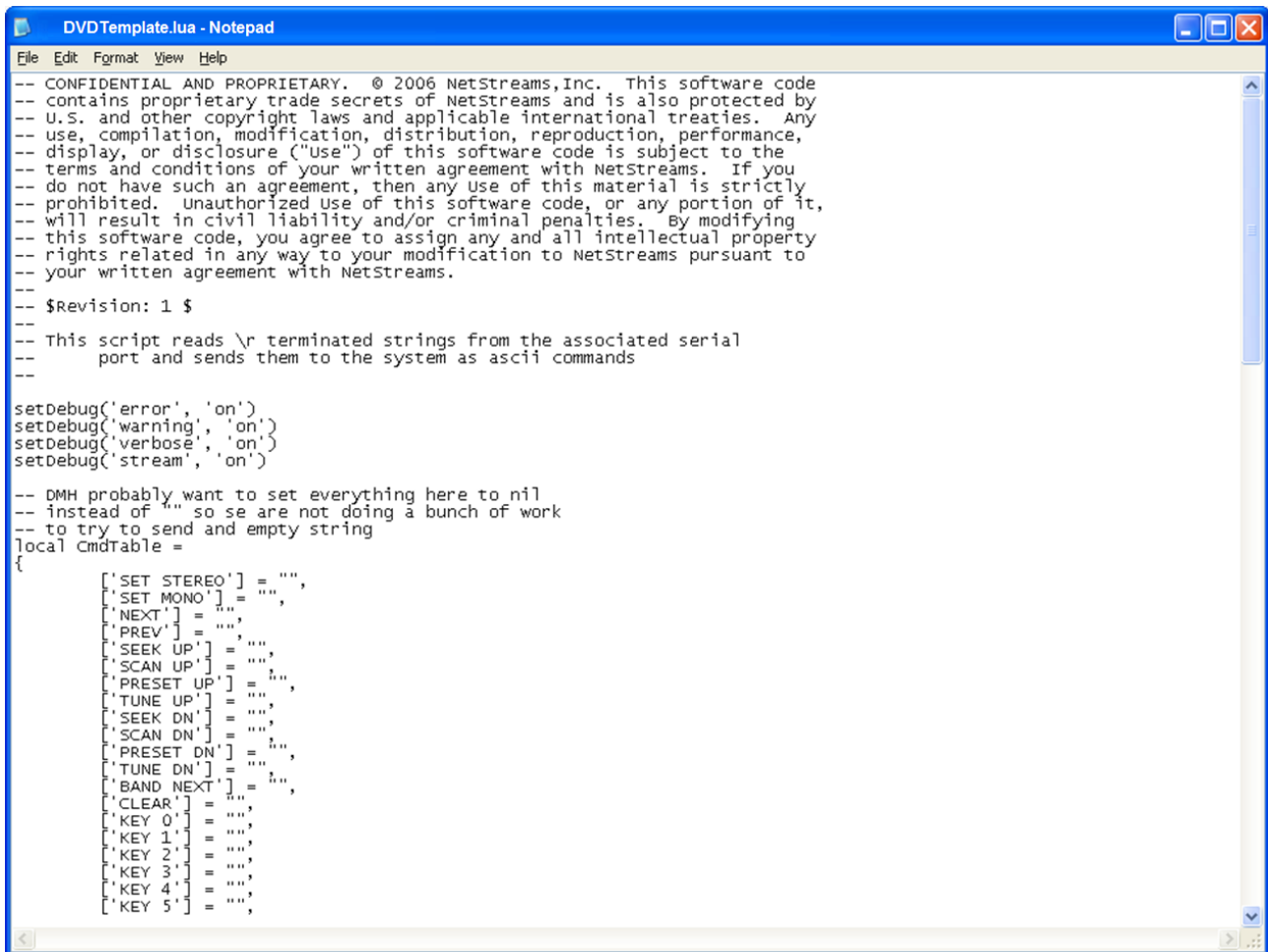
So far all you have applied is a renamed file. Now you need to modify the driver file to support your source.

MODIFYING THE ONE-WAY DRIVER FILE

To modify a Driver Template you will need to use a text editor like Notepad. Notepad is included in Windows XP and Vista. Next you'll need the RS-232 Protocol for the source. This is normally found on the manufacturer's website. This document will tell you the communication settings, pin connections, and the RS-232 commands.

In the RS-232 Protocol section of the .lua file, locate the communication settings. Normally these settings will include: Baud rate, Data Bit, Stop Bit, and Parity. Once you find them you will need to verify that these commands match those used in the driver file.

To do this, open the file in your text editor:



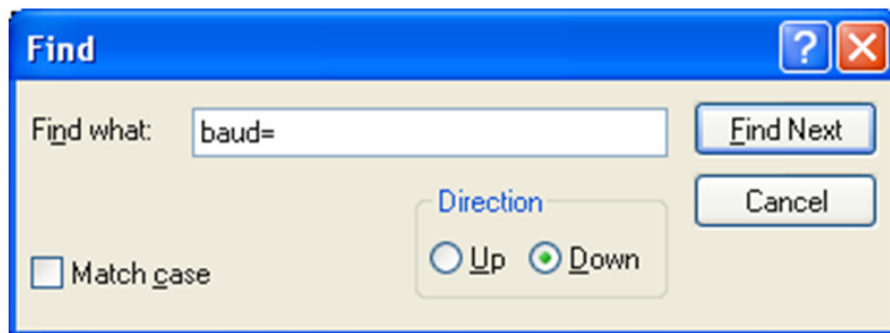
```

DVDTemplate.lua - Notepad
File Edit Format View Help
-- CONFIDENTIAL AND PROPRIETARY. © 2006 NetStreams, Inc. This software code
-- contains proprietary trade secrets of NetStreams and is also protected by
-- U.S. and other copyright laws and applicable international treaties. Any
-- use, compilation, modification, distribution, reproduction, performance,
-- display, or disclosure ("use") of this software code is subject to the
-- terms and conditions of your written agreement with NetStreams. If you
-- do not have such an agreement, then any use of this material is strictly
-- prohibited. Unauthorized use of this software code, or any portion of it,
-- will result in civil liability and/or criminal penalties. By modifying
-- this software code, you agree to assign any and all intellectual property
-- rights related in any way to your modification to NetStreams pursuant to
-- your written agreement with NetStreams.
--
-- $Revision: 1 $
--
-- This script reads \r terminated strings from the associated serial
-- port and sends them to the system as ascii commands
--
setDebug('error', 'on')
setDebug('warning', 'on')
setDebug('verbose', 'on')
setDebug('stream', 'on')

-- DMH probably want to set everything here to nil
-- instead of "" so se are not doing a bunch of work
-- to try to send and empty string
local cmdTable =
{
    ['SET STEREO'] = "",
    ['SET MONO'] = "",
    ['NEXT'] = "",
    ['PREV'] = "",
    ['SEEK UP'] = "",
    ['SCAN UP'] = "",
    ['PRESET UP'] = "",
    ['TUNE UP'] = "",
    ['SEEK DN'] = "",
    ['SCAN DN'] = "",
    ['PRESET DN'] = "",
    ['TUNE DN'] = "",
    ['BAND NEXT'] = "",
    ['CLEAR'] = "",
    ['KEY 0'] = "",
    ['KEY 1'] = "",
    ['KEY 2'] = "",
    ['KEY 3'] = "",
    ['KEY 4'] = "",
    ['KEY 5'] = "",

```

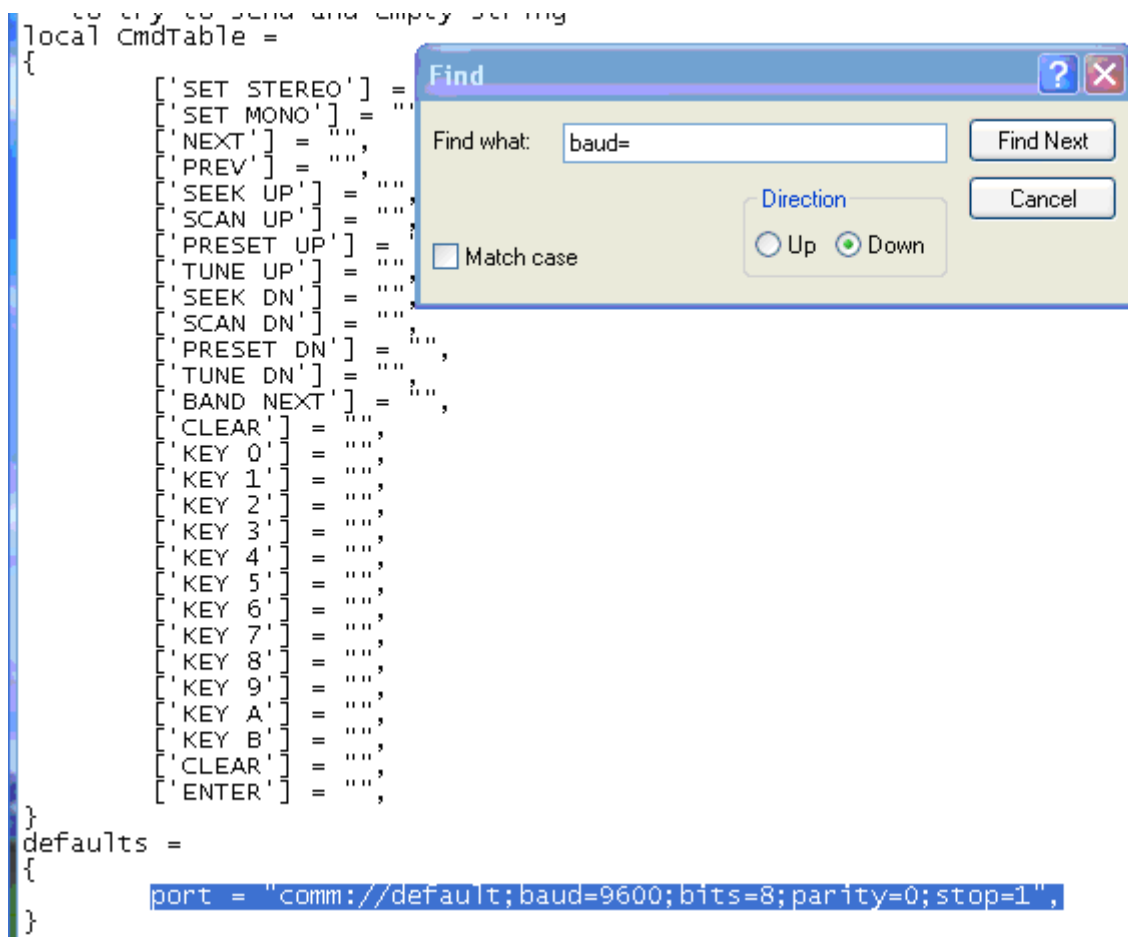
Do a text search for: **baud=**



You are looking for this line:

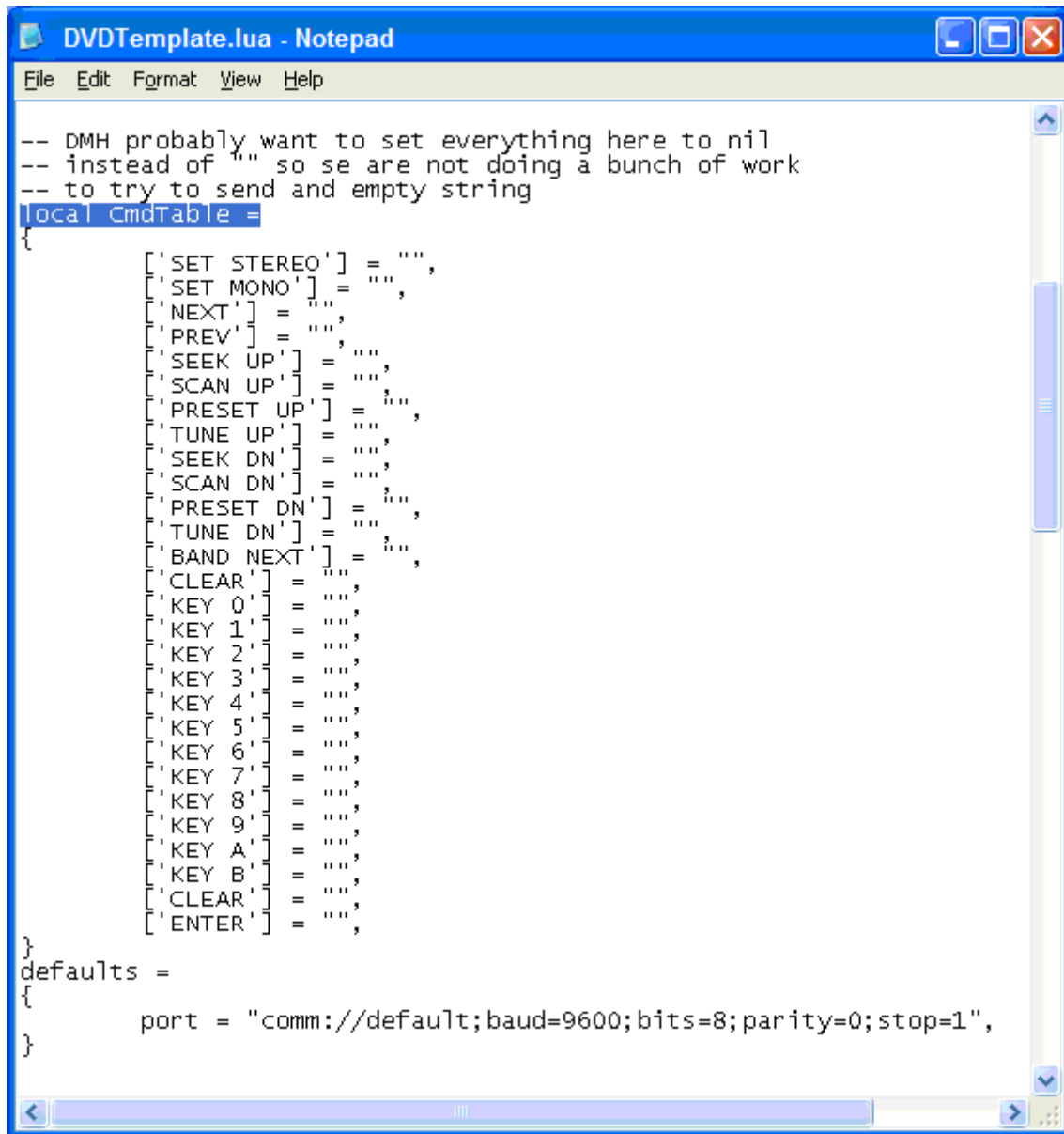
port = "comm://default;baud=9600;bits=8;parity=0;stop=1",

Verify that the baud, bits, parity, and stop values in the driver file match the settings listed in the RS-232 Protocol. Most devices use Baud=9600, Data bits=8, Parity=0, and Stop bits=1.



Now locate the Command table in the driver file.

Do a text search for: **local CmdTable =**



```
File Edit Format View Help
-- DMH probably want to set everything here to nil
-- instead of "" so se are not doing a bunch of work
-- to try to send and empty string
local CmdTable =
{
    ['SET STEREO'] = "",
    ['SET MONO'] = "",
    ['NEXT'] = "",
    ['PREV'] = "",
    ['SEEK UP'] = "",
    ['SCAN UP'] = "",
    ['PRESET UP'] = "",
    ['TUNE UP'] = "",
    ['SEEK DN'] = "",
    ['SCAN DN'] = "",
    ['PRESET DN'] = "",
    ['TUNE DN'] = "",
    ['BAND NEXT'] = "",
    ['CLEAR'] = "",
    ['KEY 0'] = "",
    ['KEY 1'] = "",
    ['KEY 2'] = "",
    ['KEY 3'] = "",
    ['KEY 4'] = "",
    ['KEY 5'] = "",
    ['KEY 6'] = "",
    ['KEY 7'] = "",
    ['KEY 8'] = "",
    ['KEY 9'] = "",
    ['KEY A'] = "",
    ['KEY B'] = "",
    ['CLEAR'] = "",
    ['ENTER'] = "",
}
defaults =
{
    port = "comm://default;baud=9600;bits=8;parity=0;stop=1",
}
```

Below the **local CmdTable =** text are the available commands where you can enter RS-232 commands. For each command you will enter the command between the quotation marks.

For example: To enter the RS-232 command for TUNE UP:

Locate the TUNE UP command line:

```
['TUNE UP'] = "",
```


Add the appropriate RS-232 command for the source to do a TUNE UP between the quotes

```
['TUNE UP'] = "W 1 6 1",
```

Note that in most RS-232 Protocols you are required to put a Carriage Return to indicate an end of command. Use **%0D** to indicate a Carriage Return.

```
['TUNE UP'] = "W 1 6 1%0D",
```

Your table should begin looking like this:



```
File Edit Format View Help
-- DMH probably want to set everything here to nil
-- instead of "" so se are not doing a bunch of work
-- to try to send and empty string
local CmdTable =
{
    ['SET STEREO'] = "",
    ['SET MONO'] = "",
    ['NEXT'] = "",
    ['PREV'] = "",
    ['SEEK UP'] = "",
    ['SCAN UP'] = "",
    ['PRESET UP'] = "",
    ['TUNE UP'] = "w 1 7 3%0D",
    ['SEEK DN'] = "",
    ['SCAN DN'] = "",
    ['PRESET DN'] = "",
    ['TUNE DN'] = "w 1 7 4%0D",
    ['BAND NEXT'] = "w 1 1 10%0D",
    ['CLEAR'] = "",
    ['KEY 0'] = "",
    ['KEY 1'] = "",
    ['KEY 2'] = "",
    ['KEY 3'] = "",
    ['KEY 4'] = "",
    ['KEY 5'] = "",
    ['KEY 6'] = "",
    ['KEY 7'] = "",
    ['KEY 8'] = "",
    ['KEY 9'] = "",
    ['KEY A'] = "",
    ['KEY B'] = "",
    ['CLEAR'] = "",
    ['ENTER'] = "",
}
defaults =
{
    port = "comm://default;baud=9600;bits=8;parity=0"
}
```

Once you have completed your changes, save the file.

From Dealer Setup, send the configuration to your Encoder/Decoder.

The StreamNet GUI will now send the RS-232 command to the source via the DB9 port instead of the IR.

VIEW Pro and VIEW Legacy Interoperability

There are several types of interoperability with VIEW Pro and the legacy VIEW products:

- Control Sharing
- Audio Streaming Interoperability
- IR Learning and Control
- Firmware Upgrading

CONTROL SHARING

From a command and control standpoint, VIEW legacy and VIEW Pro devices all appear and act the same; that is, a TouchLinX Touch Panel, Virtual Control, and VIEW Virtual Matrix (VVM) can all be used to control both types of products. Currently, command and control, and audio streams are seamless between the products. For instance, a TouchLinX can control source selection for VIEW Pro and StreamNet devices.

In StreamNet, Static Menus are menus that appear for selection in a particular room. Static Menus can be created using VIEW Pro sources in the same manner as the legacy VIEW products. Refer to Chapter 17 of the Dealer Setup Manual for “Using Static Menus.” This explains Static Menus in detail.

The VIEW Virtual Matrix software (VVM) is a program interface that can be run on a PC or laptop running Microsoft Windows 7. Unlike the room-centric based StreamNet virtual control software GUI that is created by a dealer with the StreamNet Dealer Setup software, VVM is a system-centric control software GUI. This makes it much easier for you to control large systems, or control many rooms on a single screen. In VVM the sources and destinations are differentiated by color for VIEW legacy and VIEW Pro.

- Light Blue Color = VIEW Legacy Devices
- Light Green Color = VIEW Pro Devices

AUDIO STREAMING INTEROPERABILITY

A VIEW Pro Decoder can receive audio sourced from VIEW MLA100/101/9101/4000, MLAV300/9300/9500, audioports enabled for global selection, also iPODDock, and VL100/9100/9300 reverse audio.

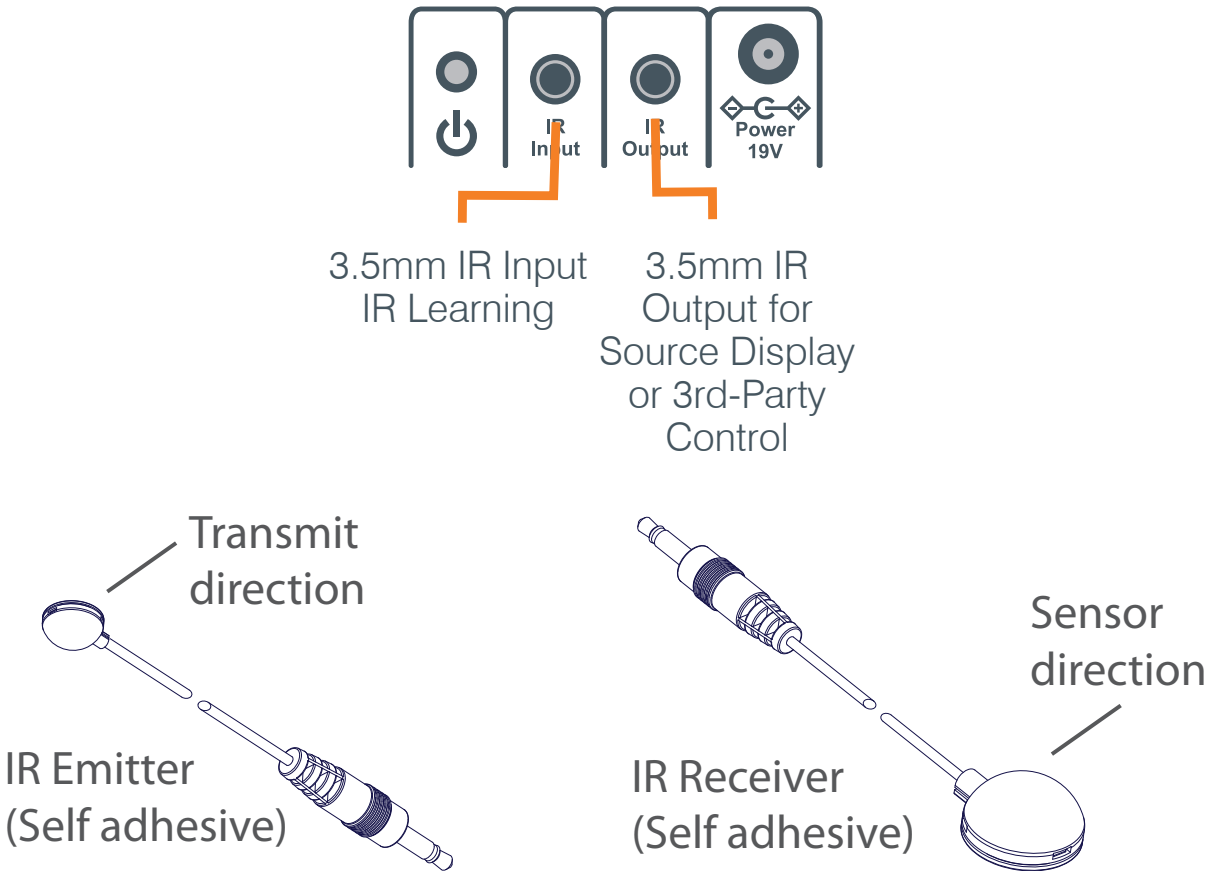
Conversely, StreamNet Devices can play audio streams from a VIEW Pro Encoder. At this time, video cannot be shared across the Products because they are using different compression schemes.

- » **NOTE:** Bridging Audio between VIEW Pro and StreamNet is a Licensed Feature. See your ClearOne business contact for additional information.

IR LEARNING AND CONTROL

The accessory kits for the IR Emitter and IR Receiver allow the use of these devices with the VIEW Pro products. For example, an IR Emitter can be placed over the integrated IR Receiver of a display so signals from the VIEW Pro can be used to control the display. An IR Receiver unit can be used to receive and relay IR commands to a device placed out of the line of sight of the IR control device.

The VIEW Pro IR tools and IR learning are used in the same manner as the VIEW Legacy products. Refer to Chapter 7 for the IR Tools section, first section (7-2) explains IR Learning in detail.



FIRMWARE UPGRADING

VIEW Pro The devices can update their firmware in the same manner as the VIEW Legacy devices. Refer to the Dealer Setup Manual, Chapter 3, Section 2 (3-2) for “Creating and Saving Projects,” which explains the Firmware Update process in detail.

VIEW Pro Accessory Kits

KIT DESCRIPTIONS

The following accessory kits are available to meet the mounting and control needs of your VIEW Pro Encoders and Decoders:

Part Number	Kit Name	Description
910-0002-001	VIEW Pro Rack Mount (Included with Encoder)	Rack Mount Kit for VIEW Pro Encoder E110 or E120, Decoder D110 <ul style="list-style-type: none"> • 2X - Rack Ear, Extended length • 6X - Screw, M3 x 6mm, Pan-head, Phillips, Thread Locking, Black
910-0002-002	VIEW Pro Wall Mount (Included with Decoder)	Wall Mount Kit for VIEW Pro Encoder E110 or E120, Decoder D110 <ul style="list-style-type: none"> • Bracket 1Ru Rack/Wall Mount • 2X - Screw, M3 x 6mm, Pan-head, Phillips, Thread Locking, Black • 2X - Bracket, 19V PSU Wall mount
910-0002-003	VIEW Pro Cable Raceway (Optional)	Cable Raceway Kit (12 inch) for Wall Mount Kit for VIEW Pro Decoder D110 <ul style="list-style-type: none"> • 1X - Extrusion, Cable Raceway Cover, 12 inch • 2X - Bracket, Cable Raceway Wall-mount Clip • 2X - Cable Tie (4 inch) • 2X - Spring Pin, 5-64 inch x 1 inch • 2X - Plastic, Edge Protector, 3 inch
910-0002-004	VIEW Pro IR Receiver (Optional)	IR Receiver cable for VIEW Pro Encoder E110 or E120, Decoder D110 <ul style="list-style-type: none"> • 1X - IR Receiver Assembly with 6 ft. cable
910-0002-005	VIEW Pro IR Receiver & Emitter (Optional)	IR Receiver Cable, IR Emitter Cable Kit for VIEW Pro Encoder E110 or E120, Decoder D110 <ul style="list-style-type: none"> • 1X - IR Receiver with 6 ft. cable, 3.5 mm plug • 1X - IR Emitter with 6 ft. cable, 3.5 mm plug

Compliance

COMPLIANCE OVERVIEW

RoHS COMPLIANCE

All components and processes used to produce the E110 or E120 will comply with the RoHS initiative.

SUSTAINABILITY

The E110 or E120 is compliant with the WEEE recycling initiative. It is made from easily recyclable materials such as aluminum and steel.

ELECTRICAL SAFETY ADVISORY

This equipment uses DC power supplied from an external source which can be subjected to electrical surges, typically lightning transients which are very destructive to customer terminal equipment. The warranty for this equipment does not cover damage caused by electrical surge or lightning transients. To reduce the risk of this equipment becoming damaged it is suggested that the customer consider installing a surge arrester.

Any modifications to the device without express authorization from ClearOne is prohibited as per 47CFR15.21 and could void the users authority to operate the device.

COMPLIANCE DETAILS

FCC COMPLIANCE

FCC Part 15: This device complies with FCC Part 15 regulations for a Class A device.

- » **NOTE:** This Class A device complies with Part 15 of the FCC rules and Canadian ICES-003. Operation is subject to the following two conditions: (1) this device may not cause harmful interference, and (2) this device must accept any interference received, including interference that may cause undesired operation.

AVC PATENT PORTFOLIO LICENSE:

THIS PRODUCT IS LICENSED UNDER THE AVC PATENT PORTFOLIO LICENSE FOR THE PERSONAL USE OF A CONSUMER OR OTHER USES IN WHICH IT DOES NOT RECEIVE REMUNERATION TO (i) ENCODE VIDEO IN COMPLIANCE WITH THE AVC STANDARD ("AVC VIDEO") AND/OR (ii) DECODE AVC VIDEO THAT WAS ENCODED BY A CONSUMER ENGAGED IN A PERSONAL ACTIVITY AND/OR WAS OBTAINED FROM A VIDEO PROVIDER LICENSED TO PROVIDE AVC VIDEO. NO LICENSE IS GRANTED OR SHALL BE IMPLIED FOR ANY OTHER USE. ADDITIONAL INFORMATION MAY BE OBTAINED FROM MPEG LA, L.L.C. SEE [HTTP://WWW.MPEGLA.COM](http://www.mpegla.com)

EUROPEAN COMPLIANCE

Details on European compliance can be found on the ClearOne website under "Resource Library".

Service and Support

If you need assistance setting up or operating your product, please contact us. We welcome your comments so we can continue to improve our products and better meet your needs.

TECHNICAL SUPPORT

Telephone: 1.800.283.5936
E-mail: tech.support@ClearOne.com
Web site: www.ClearOne.com

SALES

Telephone: 1.800.707.6994
E-mail: sales@ClearOne.com

TECHSALES

Telephone: 1.800.705.2103
E-mail: techsales@ClearOne.com

PRODUCT RETURNS

All product returns require a Return Material Authorization (RMA) number. Contact ClearOne Technical Support before returning your product. Make sure you return all the items and packing materials that originally shipped with your product.

AVOIP™

CLEARONE LOCATIONS

HEADQUARTERS:

Salt Lake City, UT USA
5225 Wiley Post Way
Suite 500
Salt Lake City, UT 84116

Tel: 801.975.7200
Toll Free: 800.945.7730
Fax: 801.303.5711
e-mail: sales@clearone.com

Europe
Tel: +44.1454.616.977
e-mail: global@clearone.com

Asia Pacific
Tel: +86.138.23287825
e-mail: global@clearone.com

Middle East
Tel: +91.9930782195
e-mail: global@clearone.com

Other Regions
Tel: +1.801.975.7200
e-mail: global@clearone.com